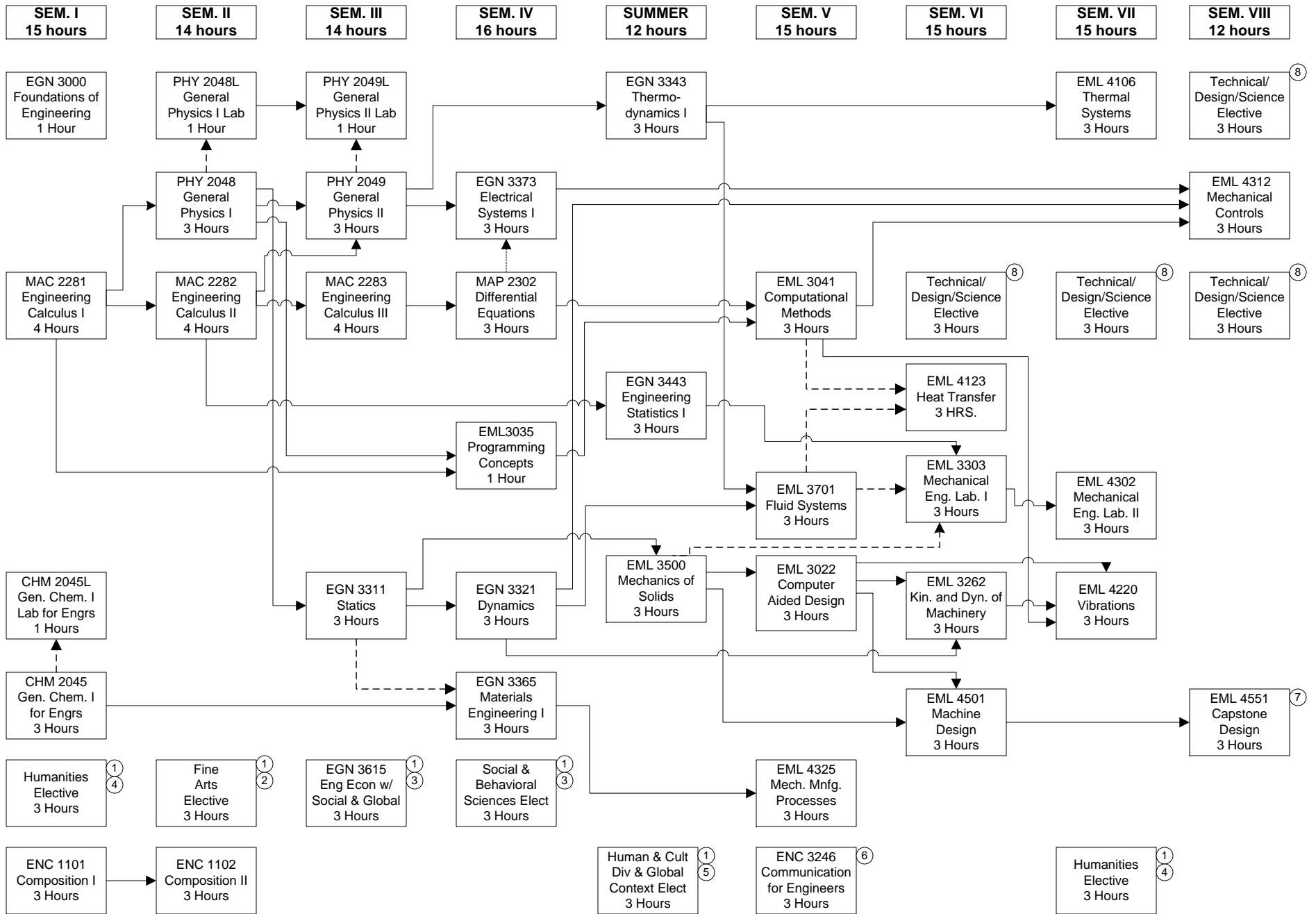


## SEQUENCE CHART FOR USF MECHANICAL ENGINEERING PROGRAM Fall 2012 (Total 128 hrs)



## **General Comments**

- Students must apply for graduation one semester prior to their anticipated graduation date.
- Solid lines are pre-requisites.
- Dashed lines are co-requisites.

## **Footnotes**

1. One of these courses must be a Gordon Rule course.
2. Any approved Fine Arts Elective from the undergraduate catalog may be taken
3. Any approved Social and Behavioral Sciences Elective from the undergraduate catalog may be taken. However, the Department requires the following course to only satisfy 1 of the 2 Social and Behavioral Sciences Electives:  
EGN 3615 – Engineering Economics with Social and Global Implications  
Please note EGN 3615 cannot be used to satisfy both, the Social and Behavioral Elective, and the Technical Elective requirements. The course will only satisfy one OR the other.
4. Any approved Humanities Elective from the undergraduate catalog may be taken.
5. Any approved Human and Cultural Diversity and Global Context Elective from the undergraduate catalog may be taken.
6. This course satisfies the USF exit requirement “Writing Intensive”. It must be taken at USF.
7. This course satisfies the USF exit requirement “Capstone”. It must be taken at USF.
8. Students must choose four courses from the approved technical/design/science electives list. Three of the four courses must be from the ME Department.

**PLEASE SEE THE ME UNDERGRADUATE COORDINATOR WITH ANY QUESTIONS**

**Dr. Dan Hess, ENC 2205, 974-5643, [hess@usf.edu](mailto:hess@usf.edu)**